

CHECKWEIGHER

CHECKWEIGHER AD-4961



*Checkweighing
Simplified!*

A&D

A&D Company, Limited

<http://www.aandd.jp>

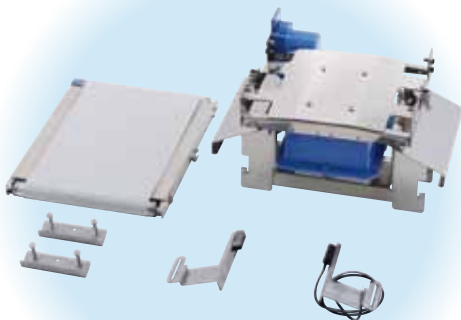
...Clearly a Better Value

Why The Unique Modular Design Maximizes Production Efficiency



Unique modular design

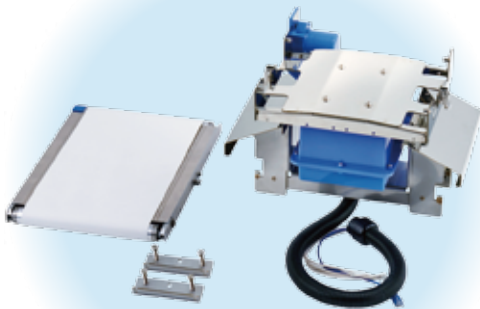
AD-4961 consists of four units, an infeed conveyor unit, a weighing conveyor unit, a control unit and a base unit, allowing fast and simple assembly. In the case of system shutdown, you do not need to wait for a service engineer to respond to the issue. Just simply replace the unresponsive module by yourself, so that you can shorten system downtime and maximize production efficiency.



Infeed conveyor unit



Control unit



Weighing conveyor unit



Base unit

Easy maintenance

The Direct Gear Drive Mechanism allows you to replace a conveyor simply and easily. The entire system is washable with a stainless steel construction and hygienic design.



Replacing a belt



Replacing a gear



Replacing a conveyor



Replacing a gear motor

A&D have redefined checkweighing with unparalleled simplicity and best-in-class precision.



Best-in-class precision

With a newly developed digital load cell and an ultra-high speed processing module, high level precision of 0.08g (3 σ) has been realized. With this high accuracy checkweigher, you can minimize the giveaway of materials above the specified weight and contribute to reductions in production costs.



IP65

Protected from dust and water to IP65 standards. Hygienic design with the entire system washable.

7 inch color touch panel

The display utilises a high visibility touch panel color LCD with user friendly Graphic User Interface (audio guidance support function included).

Stores up to 1000 products

Products can be divided into 10 different groups, with up to 100 products able to be recorded within each group.

Image import from USB

Product images can be quickly uploaded to the checkweigher from USB memory, making product identification and upload fast and simple.

Optimization of weighing configuration

By inputting throughput(products per minute) or belt speed(m/min), optimal weighing conditions can be automatically set. You can weigh products precisely without inputting various setting.

Lightweight and compact design

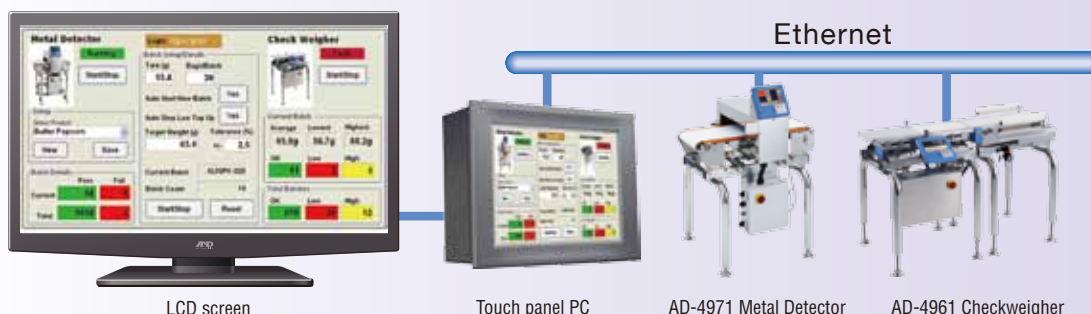
With it's modular structure, the AD-4961 allows for rapid and simple installation or relocation.



USB memory



Equipped with Modbus RTU/Modbus TCP as standard.
With Modbus communication, seamless connection can be easily achieved.
Operations such as stopping and starting weighing, collecting data and changing product can all be set from an external device.



Rejector output , alarm output, metal detector input, RS-232C, TCP/IP and USB interface are equipped as standards.
Storing data in USB memory or outputting to a printer are also possible.



Various summary data such as histograms (frequency including defects), X charts, R charts, total summaries, etc., are available.
You can visually confirm fluctuation of weighing results and adjust your manufacturing machine accordingly.

*For further information please refer to "histogram" and "X chart" on the next page.

The AD-4961 also has an internal memory of up to 100 sets of weighing data.
(By using USB memory the number of data records can be increased.)



Various reports or charts can be outputted to a PostScript printer via Ethernet.
You can also save them in a pdf format to a USB memory.

Reject modules and options



AD-4981-2057
Screening capability 120pcs/min.



AD-4982-2035
Screening capability 150pcs/min.



*Please prepare an air compressor with a ϕ 6mm air tube to be connected to the filter regulator of the rejector.
Air supply: 0.5MPa, 0.1NL/time

checkweigher which can be used for easy system design with connection and communication with external devices.

History function

The history of configuration changes can be recorded and displayed. Suitable for use in HACCP programs along with the weighing history function.

Users can be registered and their scope of permitted operations controlled according to 4 management levels.

[Operator]

[Supervisor]

[Quality Manager]

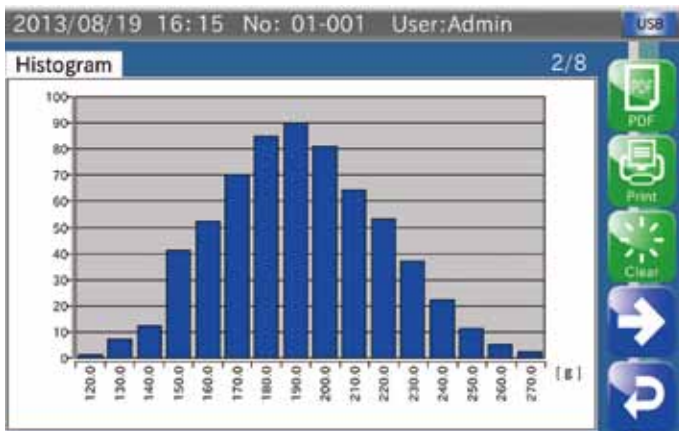
[Administrator]

By assigning each user to the appropriate level of access, inadvertent operations can be avoided.*2

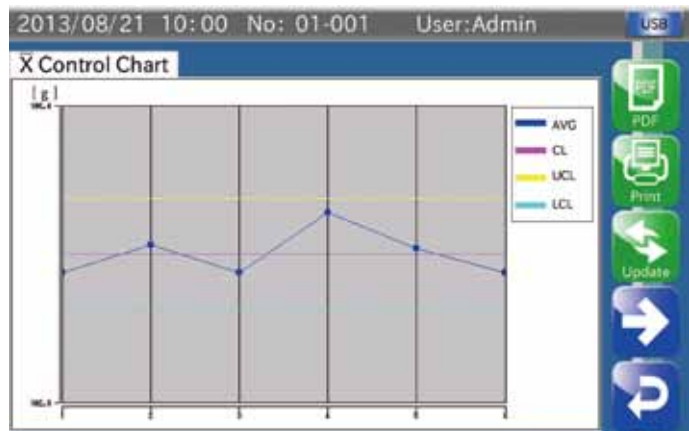
*2 "Operator" is set as the factory default setting.

Time	User Name	No.	Item	Detail
2013/8/19 13:50	Admin	1-001	Stability Time	1.000 - 2.000
2013/8/19 15:50	Admin	1-001	Login	
2013/8/19 15:51	Admin	1-001	Language	0 = 1
2013/8/19 15:58	Operator	1-001	Login	
2013/8/19 15:59	Murata	1-001	Login	
2013/8/19 15:59	Murata	1-001	Target	57.00 - 100.00
2013/8/19 16:00	Operator	1-001	Login	
2013/8/19 16:00	Nishimura	1-001	Login	
2013/8/19 16:00	Mohimura	1-001	Stability Wei	10.00 - 5.00
2013/8/19 16:00	Operator	1-001	Login	
2013/8/19 16:01	Admin	1-001	Login	

Histogram display screen



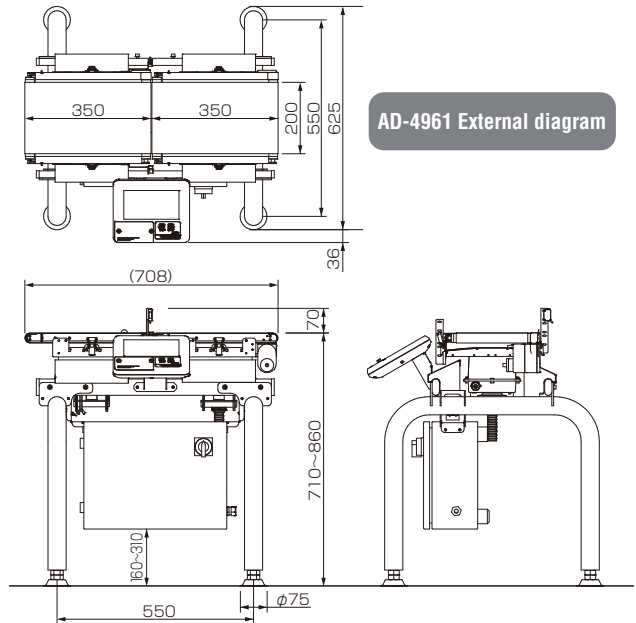
X̄ chart screen



Specifications

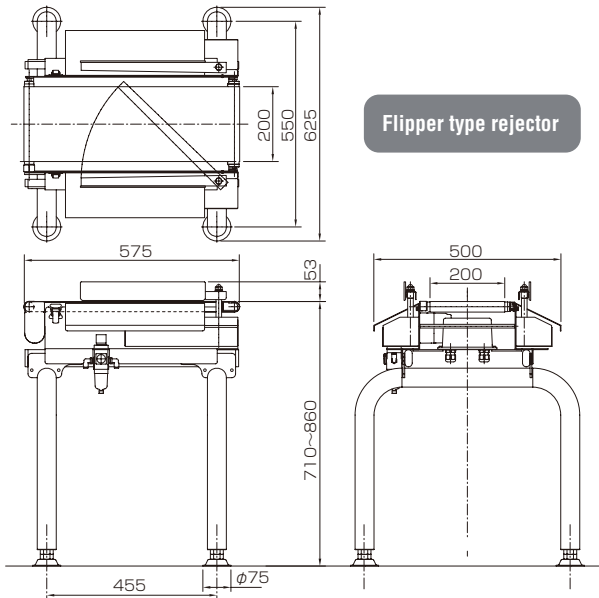
Model	AD-4961-2KD-2035
Capacity	500g / 2,000g
Resolution	0.01g / 0.1g
Accuracy(3 σ)*1	0.08g/0.18g
Throughput	320pcs/min
Conveyor belt width	200mm
Conveyor length	350mm
Transport medium	Urethane belt
Conveyor belt speed	15~120m/min
Max. product dimensions	Length : 30~300mm Width : 200mm
Weighing sensor	Strain gauge load cell
Display	7inch touch panel color display
Operation method	Touch panel (WVGA), Key switch
Number of recorded items	1,000 items (10 groups x 100 items)
Communication functions	Modbus TCP / Modbus RTU / RS-232C(metal detector) / TCP/IP(PostScript printer) / USB (for USB memory, data storage, image import use) *3
External input	Non-voltage contact input 4points
External output	Relay output 8points
Dust/water resistance specifications	IP65 compliant
Operation temperature/humidity range	-5 ~ 40°C / humidity below 85%(with no condensation)
Power supply *4	Single phase AC100V - 240V(+10% / -15%), 50/60Hz 180VA
External dimensions *2	Width : 700mm / Depth: 600mm / Height: 710~860mm
Weight *2	Approx. 35kg
Material	Display : ABS resin Conveyor unit : Aluminum(alumite coating) and ABS resin Control box : Stainless steel Base unit : Stainless steel

*1 Depends on the shape and the condition of the product and installation environment.
*2 Values for external dimensions and weight are for the standard condition without rejector.
*3 USB memory must be formatted to FAT32.
*4 Please prepare a ϕ 4-7mm power cable.

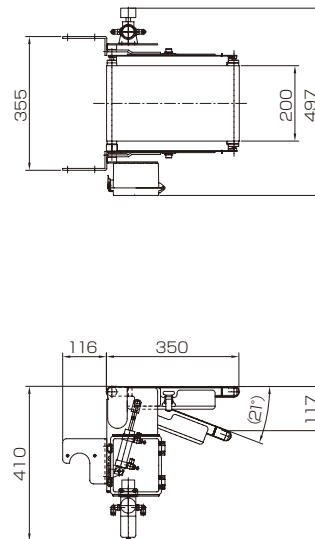


AD-4961 External diagram

When the display stand is used, the display is attached on the opposite side from the standard display position. The display will be at a height approximately 310mm above the conveyor belt.



Flipper type rejector



Conveyor drop type rejector

Unit : mm

AND

...Clearly a Better Value

A&D Company, Limited

3-23-14 Higashi-Ikebukuro, Toshima-ku, Tokyo 170-0013 JAPAN
Telephone:[81](3) 5391-6132 Fax:[81](3) 5391-6148
http://www.aandd.jp

A&D ENGINEERING, INC.

1756 Automation Parkway, San Jose, CA 95131 U.S.A.
Telephone:[1](408) 263-5333 Fax:[1](408) 263-0119

A&D Australasia Pty Ltd.

32 Dew Street, Thebarton, South Australia 5031 AUSTRALIA
Telephone:[61](8) 8301-8100 Fax:[61](8) 8352-7409

A&D INSTRUMENTS LTD.

Unit 24/26 Blacklands Way Abingdon Business Park,
Abingdon, Oxon OX14 1DY UNITED KINGDOM
Telephone:[44](1235) 550420 Fax:[44](1235) 550485

<German Sales Office>

Hamburger StraÙe 30 D-22926 Ahrensburg GERMANY
Telephone:[49](0) 4102 459230 Fax:[49](0) 4102 459231

A&D KOREA Limited

Manhattan Bldg. 8F, 36-2 Yoido-dong, Youngdeungpo-gu, Seoul, KOREA
Telephone:[82](2) 780-4101 Fax:[82](2) 782-4280

A&D RUS CO., LTD.

Vereyskaya str.17, Moscow, 121357 RUSSIA
Telephone: [7] (495) 937-33-44 Fax: [7] (495) 937-55-66

A&D Instruments India Private Limited

509 Udyog Vihar Phase V
Gurgaon-122 016, Haryana, INDIA
Telephone:[91](124) 471-5555 Fax:[91](124) 471-5599